



SHOVELS

Advanced L&H technology for electric rope shovels and hydraulic excavators



FIELD SERVICES



DESIGN & ENGINEERING



MANUFACTURING & REPAIR

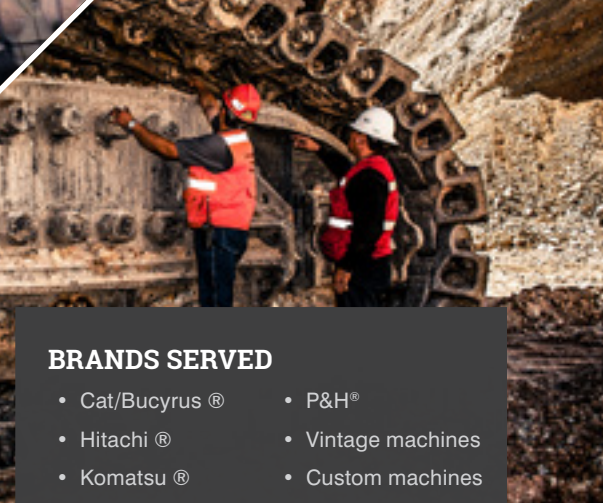


Improving the world's hardest-working heavy machines

Honestly Better. From the mining industry's most sophisticated undercarriages to machine modifications that drastically reduce maintenance times to metallurgy that extends component life, L&H technology improves electric rope shovels and hydraulic excavators from the ground up.



Honestly Better.™



L&H innovations for electric rope shovels

Our specialized engineers have made major strides in improving the lifetime performance of major shovel assemblies.

- **L&H Omega Undercarriages** last 30% longer than OEM undercarriages.
- **L&H Omega Swing Systems** have universal bolt patterns and 300% more thrust surface.
- **L&H Omega Booms** offer larger forgings in the bottom foot and boom point, along with an increased belly plate thickness below the shipper shaft, increasing strength and rigidity.

Select components & assemblies

Shovels

PROPEL SYSTEM

- Crawler assembly
- Final drive
- Transmission

SWING SYSTEM

- Roller circle
- Transmission
- Center pin
- Shafting

CROWD SYSTEM

- Dipper stick/handle
- Transmission
- Shipper shaft
- Saddle block

HOIST SYSTEM

- Transmission
- Hoist drums
- Boom point assembly

ATTACHMENTS & STRUCTURES

- Carbody
- Gantry
- Boom
- Revolving frame

DIPPER

- Hydraulic snubbers
- Friction discs
- Pins and bushings kits

Excavators

- Undercarriages
- Cylinders
- Buckets
- Bucket pins and bushings kits

BRANDS SERVED

- Cat/Bucyrus ®
- Hitachi ®
- Komatsu ®
- Liebherr ®
- P&H®
- Vintage machines
- Custom machines

L&H FIELD SERVICES

- Machine rebuilds
- Rush breakdown repairs
- UT analysis
- Failure analysis & troubleshooting
- Full machine audits & inspections
- Equipment relocations
- Machine customizations

HIGHER PERFORMANCE & SAFETY STANDARDS

100% of L&H premium components meet or—more often—exceed OEM standards for performance, quality, and safety. We will gladly provide you with a comparison of the specifications and performance data.



Contact us to improve the performance of your entire fleet of mining machines.

